



GENDER BASED VIOLENCE (GBV) **RESPONSE SERVICE DIRECTORY**

State:	Borno
Date created:	February 3rd, 1976
Capital:	Maiduguri
Total Area:	57,799 km ² (22,316 sq mi)
Area rank:	3rd of 36
Total Population:	4,171,104 (2006.Census)
Population Rank:	12th of 36
Density:	72/km ² (190/sq mi)
Language:	Predominantly Kanuri



STREPCIN
Strengthening Sexual and
Reproductive Health service
provision in conflict affected
communities in North-East

act:onaïd

Responding to the endemic

Gender Based Violence

The term Gender Based Violence (GBV) refers to any harm that is perpetrated against a person's will, and that results from power inequalities that are based on gender roles. The incidence of GBV is growing astronomically as a result of the activities of insurgents in North East, Nigeria. From forced and early marriages to physical, mental or sexual assault, the cases of GBV varies in different localities.

UNFPA and partners are providing survivors with medical, reproductive health services and/or psychosocial care as part of our commitment to rehabilitate survivors who have been abused and to help them overcome their ordeal.

To achieve a holistic and timely intervention, all the service areas involved in the care of survivors of GBV must work hand in hand in a systematic and organised manner. The mechanism through which a survivor is linked to the various services required is called REFERRAL PATHWAY. A simple referral pathway in which all the service providers are aware of the available services is essential for the wellbeing of a GBV survivor.



3 in 10

Nigerian women have experienced physical violence by age 15
(Nigeria Demographic and Health Survey, NDHS - 2013).

A person above 14 years convicted of rape is liable to life imprisonment or a minimum of 12 years imprisonment without the option of fine?

Part 1, Sec 2 (b) Violence Against Persons (Prohibition) Act, 2015



STRESPCIN
Strengthening Sexual and
Reproductive Health service
provision in conflict affected
communities in North-East

act:onaid

Did you know?

May 2018

Su	Mo	Tu	We	Th	Fr	Sa
		1	2	3	4	5
6	7	8	9	10	11	12
13	14	15	16	17	18	19
20	21	22	23	24	25	26
27	28	29	30	31		

June 2018

Su	Mo	Tu	We	Th	Fr	Sa
					1	2
3	4	5	6	7	8	9
10	11	12	13	14	15	16
17	18	19	20	21	22	23
24	25	26	27	28	29	30

July 2018

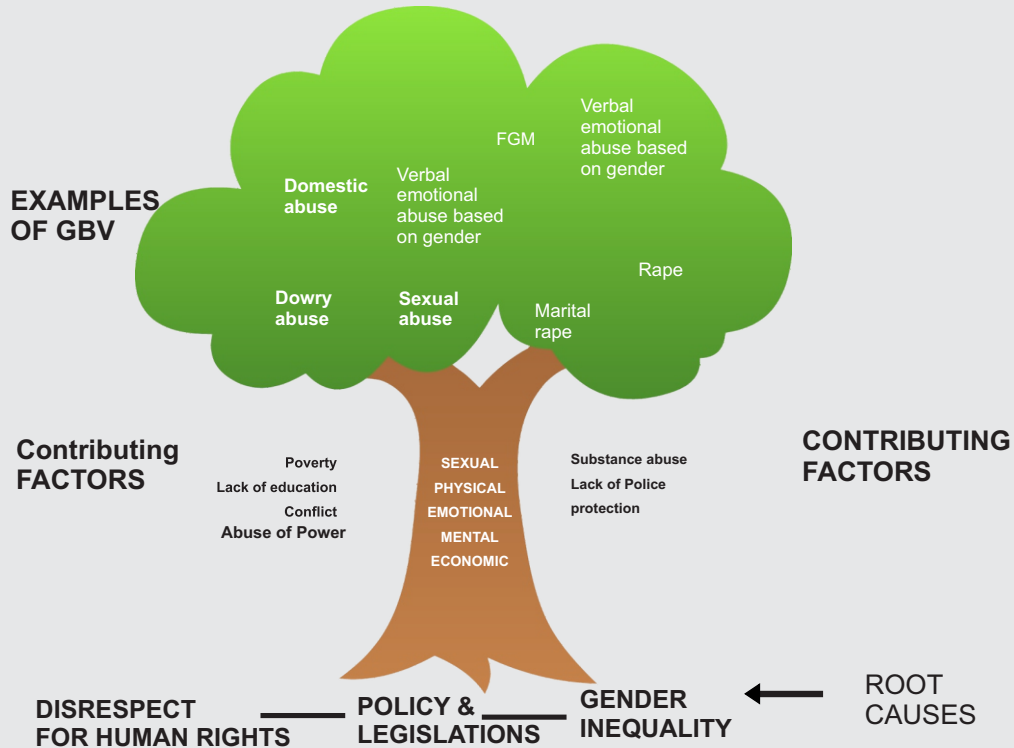
Su	Mo	Tu	We	Th	Fr	Sa
1	2	3	4	5	6	7
8	9	10	11	12	13	14
15	16	17	18	19	20	21
22	23	24	25	26	27	28
29	30	31				

August 2018

Su	Mo	Tu	We	Th	Fr	Sa
			1	2	3	4
5	6	7	8	9	10	11
12	13	14	15	16	17	18
19	20	21	22	23	24	25
26	27	28	29	30	31	

THE GENDER BASED VIOLENCE (GBV) TREE

The tree illustrates the types of GBV, contributing factors and root causes



STRESPCIN
Strengthening Sexual and Reproductive Health service provision in conflict affected communities in North-East



Rape is when a person intentionally penetrates the vagina, anus or mouth of another person with any other part of his or her body or anything else without consent, or where such consent is obtained by force or means of threat or intimidation of any kind or by fear of harm or by means of false and fraudulent representation as to the nature of the act or the use of any substance or additive capable of taking away the will of such person or in the case of a married person by impersonating his or her spouse. Violence Against Persons (Prohibition) Act, 2015

Did you know?

September 2018

Su	Mo	Tu	We	Th	Fr	Sa
						1
2	3	4	5	6	7	8
9	10	11	12	13	14	15
16	17	18	19	20	21	22
23	24	25	26	27	28	29
30						

November 2018

Su	Mo	Tu	We	Th	Fr	Sa
				1	2	3
4	5	6	7	8	9	10
11	12	13	14	15	16	17
18	19	20	21	22	23	24
25	26	27	28	29	30	

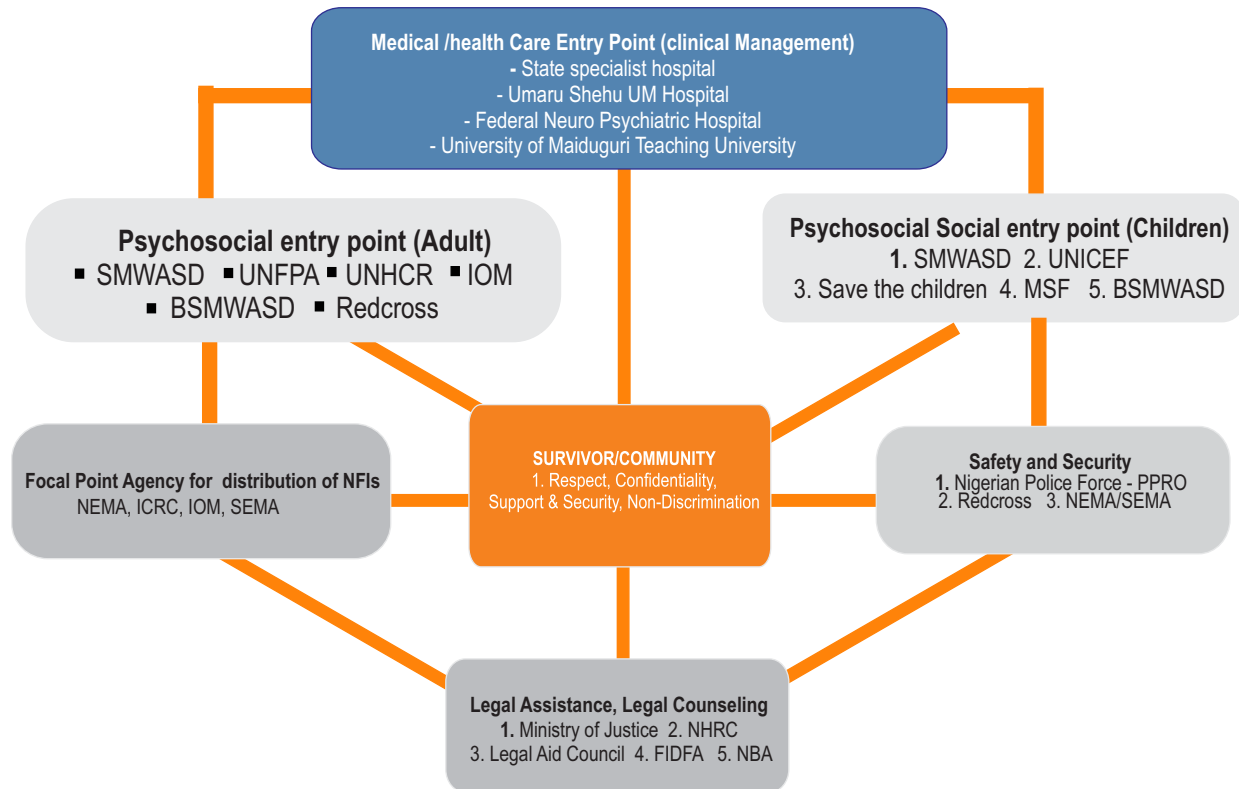
October 2018

Su	Mo	Tu	We	Th	Fr	Sa
	1	2	3	4	5	6
7	8	9	10	11	12	13
14	15	16	17	18	19	20
21	22	23	24	25	26	27
28	29	30	31			

December 2018

Su	Mo	Tu	We	Th	Fr	Sa
						1
2	3	4	5	6	7	8
9	10	11	12	13	14	15
16	17	18	19	20	21	22
23	24	25	26	27	28	29
30	31					

Borno State GBV Mechanism/ Pathway



A person who willfully causes or inflicts injury on another by means of any weapon, substance or object, commits an offence and is liable on conviction to a term of imprisonment not exceeding 5 years or a fine not exceeding N100,000 or both?
Violence Against Persons (Prohibition) Act, 2015



STRESCPIN
Strengthening Sexual and Reproductive Health service provision in conflict affected communities in North-East



Did you know?

January 2019

Su	Mo	Tu	We	Th	Fr	Sa
		1	2	3	4	5
6	7	8	9	10	11	12
13	14	15	16	17	18	19
20	21	22	23	24	25	26
27	28	29	30	31		

February 2019

Su	Mo	Tu	We	Th	Fr	Sa
					1	2
3	4	5	6	7	8	9
10	11	12	13	14	15	16
17	18	19	20	21	22	23
24	25	26	27	28		

March 2019

Su	Mo	Tu	We	Th	Fr	Sa
					1	2
3	4	5	6	7	8	9
10	11	12	13	14	15	16
17	18	19	20	21	22	23
24	25	26	27	28	29	30
31						

April 2019

Su	Mo	Tu	We	Th	Fr	Sa
	1	2	3	4	5	6
7	8	9	10	11	12	13
14	15	16	17	18	19	20
21	22	23	24	25	26	27
28	29	30				

May 2019

Su	Mo	Tu	We	Th	Fr	Sa
			1	2	3	4
5	6	7	8	9	10	11
12	13	14	15	16	17	18
19	20	21	22	23	24	25
26	27	28	29	30	31	

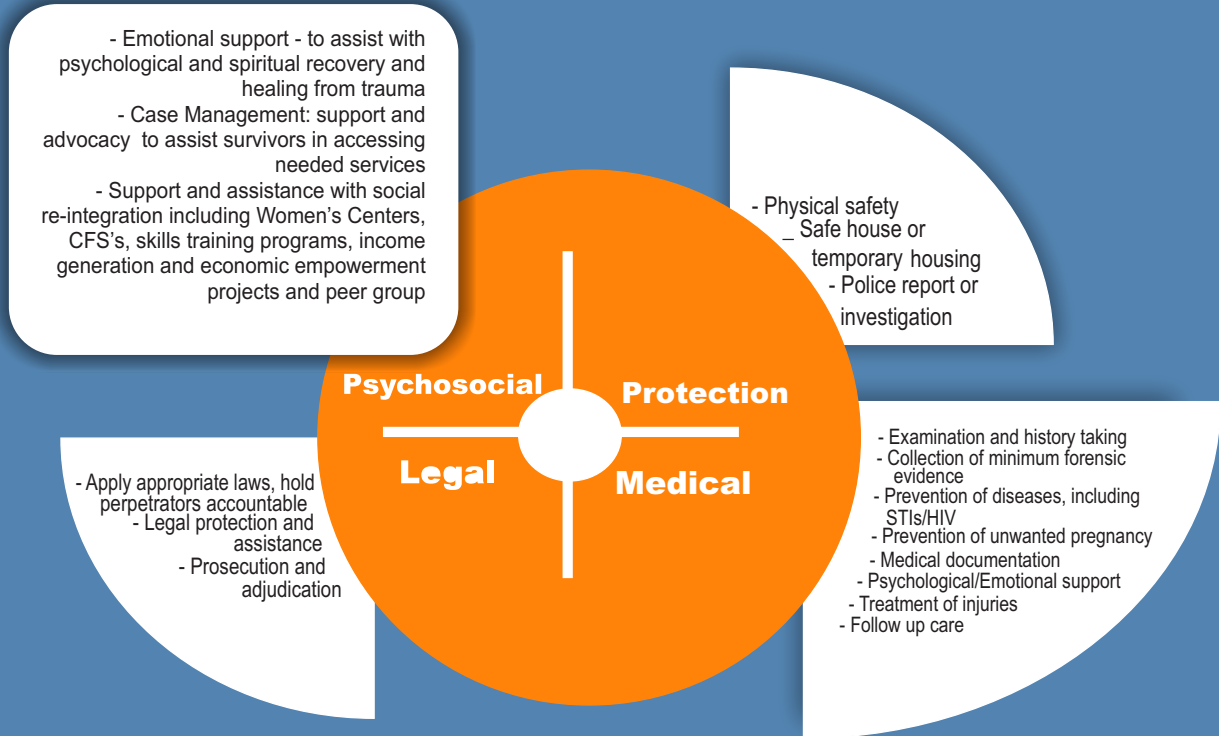
June 2019

Su	Mo	Tu	We	Th	Fr	Sa
						1
2	3	4	5	6	7	8
9	10	11	12	13	14	15
16	17	18	19	20	21	22
23	24	25	26	27	28	29
30						

SERVICE AREAS

The act of GBV on an individual creates a medical and social burden which requires several services in order to rehabilitate the survivor. These services include:

I. Medical ii. Protection iii. Legal iv. Psychosocial Support (PSS)



A safe community is a collective responsibility. Together, we can end
Gender Based Violence. Play your part.

July 2019

Su	Mo	Tu	We	Th	Fr	Sa
	1	2	3	4	5	6
7	8	9	10	11	12	13
14	15	16	17	18	19	20
21	22	23	24	25	26	27
28	29	30	31			

August 2019

Su	Mo	Tu	We	Th	Fr	Sa
				1	2	3
4	5	6	7	8	9	10
11	12	13	14	15	16	17
18	19	20	21	22	23	24
25	26	27	28	29	30	31

September 2019

Su	Mo	Tu	We	Th	Fr	Sa
1	2	3	4	5	6	7
8	9	10	11	12	13	14
15	16	17	18	19	20	21
22	23	24	25	26	27	28
29	30					

October 2019

Su	Mo	Tu	We	Th	Fr	Sa
		1	2	3	4	5
6	7	8	9	10	11	12
13	14	15	16	17	18	19
20	21	22	23	24	25	26
27	28	29	30	31		

November 2019

Su	Mo	Tu	We	Th	Fr	Sa
					1	2
3	4	5	6	7	8	9
10	11	12	13	14	15	16
17	18	19	20	21	22	23
24	25	26	27	28	29	30

December 2019

Su	Mo	Tu	We	Th	Fr	Sa
1	2	3	4	5	6	7
8	9	10	11	12	13	14
15	16	17	18	19	20	21
22	23	24	25	26	27	28
29	30	31				

NOTE: No action should be taken without the permission of the survivor, if and when appropriate.

1

Always observe the guiding principles:

Safety
Confidentiality
Respect
Non-discrimination

2

Sexual violence should be referred to the police for completion of First Information Report (FIR) before any medical treatment by authorised medical officer.

3

Keep the number of people informed of the case to an absolute minimum.

4

Key Guidelines:

- Conduct discussions in private settings
- Try to conduct discussions with same sex staff
- Be a good listener, and non-judgemental
- Be patient; don't press her for information she doesn't want to share
- Ask only relevant questions
- Avoid the survivor having to repeat her story in multiple interviews
- Do not laugh, show disrespect or disbelief
- NEVER blame the survivor

5

Prioritise Healthcare

Inform the survivor of available health resources and benefits to seeking healthcare.

(If survivor is under 18, she must be accompanied by a family member, a guardian, or an adult she knows and trusts)

Always inform the survivor of the importance of accessing health care within 72 hours of the incident, if possible and if she chooses. Its better to access medical services as soon as possible after the incident.

6

Handling Cases Involving Minors (Survivors)

A child survivor should never be interviewed without his/her informed consent. Interviewing of minors and/or documentation of cases involving minors should be done in the presence of an appropriate adult or caregiver, as identified by the minor.

At no point should a minor (Survivor) be interviewed alone.

At all times in the referral process, prioritise survivor and staff safety and security.

Referral Mechanism Guide



STREPCIN
Strengthening Sexual and Reproductive Health service provision in conflict affected communities in North-East



Say YES to Justice for GBV survivors;

when you hear about Gender Based Violence,
do not sit, act!



STRESCIN
Strengthening Sexual and
Reproductive Health service
provision in conflict affected
communities in North-East

act:onaid

January 2020

Su	Mo	Tu	We	Th	Fr	Sa
			1	2	3	4
5	6	7	8	9	10	11
12	13	14	15	16	17	18
19	20	21	22	23	24	25
26	27	28	29	30	31	

February 2020

Su	Mo	Tu	We	Th	Fr	Sa
						1
2	3	4	5	6	7	8
9	10	11	12	13	14	15
16	17	18	19	20	21	22
23	24	25	26	27	28	29

March 2020

Su	Mo	Tu	We	Th	Fr	Sa
1	2	3	4	5	6	7
8	9	10	11	12	13	14
15	16	17	18	19	20	21
22	23	24	25	26	27	28
29	30	31				

April 2020

Su	Mo	Tu	We	Th	Fr	Sa
			1	2	3	4
5	6	7	8	9	10	11
12	13	14	15	16	17	18
19	20	21	22	23	24	25
26	27	28	29	30		

May 2020

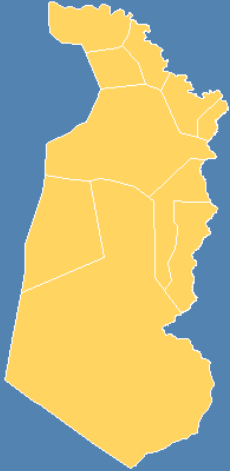
Su	Mo	Tu	We	Th	Fr	Sa
					1	2
3	4	5	6	7	8	9
10	11	12	13	14	15	16
17	18	19	20	21	22	23
24	25	26	27	28	29	30
31						

June 2020

Su	Mo	Tu	We	Th	Fr	Sa
	1	2	3	4	5	6
7	8	9	10	11	12	13
14	15	16	17	18	19	20
21	22	23	24	25	26	27
28	29	30				

REFERRAL DIRECTORY

Bama Local Government



Area: 4,997 km²
 Population: 269,986
 (2006 census)
 Postal Code: 610

Medical/Healthcare Entry Point

	CENTRE	TYPE (PUBLIC/PRIVATE)	LOCATION	SERVICES	BUSINESS HOUR	CONTACT PERSON
1	NAF Hospital	Public	Bama	Medical	12 HOURS	Nil
2	General Hospital	Public	Bama	Medical	24 HOURS	Dr. Audu Usman 08024158837
3	UNICEF Clinic	Private	Banki	Medical	12 HOURS	Goni Mustapha
4	fhi360 Clinic	Private	Banki	Medical	12 HOURS	Nil
5	HNERP	Public	Bama	Medical	24 HOURS	Dr Godspower Esogban

Psychosocial Support (PSS) Entry Point (Adult and Children)

	CENTRE	TYPE (PUBLIC/PRIVATE)	LOCATION	SERVICES	BUSINESS HOUR	CONTACT PERSON
1	HNERP	Public	Bama	PSS	24 HOURS	Fatima Barma Mohammed 08021257727
2	UNFPA	Private	Bama	PSS	24 HOURS	Ibrahim Abubakar, 08084638575
3	UNFPA	Private	Bama	PSS	24 HOURS	Dawwud Jibrin, 08026547183
4	UNFPA	Private	Bama	PSS	24 HOURS	Yagana Grema, 08063498181
5	UNFPA	Private	Bama	PSS	24 HOURS	Hauwa Mohd, 08038009034
6	UNFPA	Private	Bama	PSS	24 HOURS	Babagan Lewami, 08086029912
7	UNFPA	Private	Bama	PSS	24 HOURS	Saidu Bukar, 08021256522
8	UNFPA	Private	Bama	PSS	24 HOURS	Yagana Baba, 07038276604
9	UNFPA	Private	Bama	PSS	24 HOURS	Mohd Goni, 07068036250



STRESPCIN
 Strengthening Sexual and Reproductive Health service provision in conflict affected communities in North-East



Safety & Security

	CENTRE	TYPE	LOCATION	SERVICES	BUSINESS HOUR	CONTACT PERSON
1	Nigerian Police Force	Public	Bama	Protection	24 Hours	Sgt Salihu Haruna
2	NEMA/SEMA	Public	Bama	Protection	24 Hours	Gambo Bulama -08064160377
3	NEMA/SEMA	Public	Bama	Protection	24 Hours	Baba Wakil Bukar - 07034387087
4	Nigerian Army HQ	Public	Bama	Protection	24 Hours	Hamisu MP (07067739386)
5	Nigerian Immigration services	Public	Bama	Protection	24 Hours	Mustapha Bukar (08035500813)
6	NSCDS	Public	Bama	Protection	24 Hours	Bakari Usman Mohd - 09092569710
7	Civilian JTF	Public	Bama	Protection	24 Hours	Mu'azu Alh. Musiya

Legal Services

1	District Head Palace	Private	Banki	Reconciliation/ counseling	24 Hours	Alh. Baba Shehu Arjunoma, 07032208009
---	----------------------	---------	-------	-------------------------------	----------	---------------------------------------

Humanitarian Service

	CENTRE	TYPE	LOCATION	SERVICES	BUSINESS HOUR	CONTACT PERSON
1	HALI	Private	Bama	Humanitarian	12 Hours	Yakori Bulama, 08068999846
2	I.O.M	Private	Bama	Humanitarian	12 Hours	Isa, 08068999846
3	DRC	Private	Banki	Humanitarian	12 Hours	Ibrahim Tijjani, 08088134521
4	BAMCOPY	Private	Banki	Humanitarian	12 Hours	Ali Jidda, 07031309317
5	UNICEF	Private	Bama	Humanitarian	12 Hours	Adam Mohammed, 08145944147

No excuse for domestic abuse; what goes on behind your closed door is my business if it violates your partners' physical, psychological and emotional wellbeing.

July 2020

Su	Mo	Tu	We	Th	Fr	Sa
			1	2	3	4
5	6	7	8	9	10	11
12	13	14	15	16	17	18
19	20	21	22	23	24	25
26	27	28	29	30	31	

August 2020

Su	Mo	Tu	We	Th	Fr	Sa
						1
2	3	4	5	6	7	8
9	10	11	12	13	14	15
16	17	18	19	20	21	22
23	24	25	26	27	28	29
30	31					

September 2020

Su	Mo	Tu	We	Th	Fr	Sa
		1	2	3	4	5
6	7	8	9	10	11	12
13	14	15	16	17	18	19
20	21	22	23	24	25	26
27	28	29	30			

October 2020

Su	Mo	Tu	We	Th	Fr	Sa
				1	2	3
4	5	6	7	8	9	10
11	12	13	14	15	16	17
18	19	20	21	22	23	24
25	26	27	28	29	30	31

November 2020

Su	Mo	Tu	We	Th	Fr	Sa
1	2	3	4	5	6	7
8	9	10	11	12	13	14
15	16	17	18	19	20	21
22	23	24	25	26	27	28
29	30					

December 2020

Su	Mo	Tu	We	Th	Fr	Sa
		1	2	3	4	5
6	7	8	9	10	11	12
13	14	15	16	17	18	19
20	21	22	23	24	25	26
27	28	29	30	31		

REFERRAL DIRECTORY

Kaga Local Government

Medical/Healthcare Entry Point (Clinical Management of Rape)

	CENTRE	TYPE	LOCATION	SERVICES	BUSINESS HOUR	CONTACT PERSON
1	P.H.C	Public	Benishiekh	Medical	8 Hours	Maryam Bosoma, 08067104571, 07087112124
2	HNERP	Public	Benishiekh	Medical	24 hours	Dr. Nwoke Chukwuebuka E.
3	MSF	Public	Benishiekh	Medical	12 hours	Grace Kyache Bwete 07014087443
4	Maternal and Child Clinic	Public	Mainok	Medical	12 hours	Halima Umar Ngamdu 08029118862, 08055705314,
5	Ngamdu Model Health Center	Public	Ngamdu	Medical	12 hours	Baba Ngubdo, 08032862450, 08024570703
6	Maternal and Child Health Clinic	Public	Benishiekh	Medical	12 hours	Hauwa Wasaram, 08083600336
7	UNICEF	Public	Benishiekh	Medical	12 hours	Ali Gambo, 08124772201

Safety and Security

	CENTRE	TYPE	LOCATION	SERVICES	BUSINESS HOUR	CONTACT PERSON
1	NSCDC	Public	Benishiekh	Protection	24 Hours	Shettima Abubakar 08031190039, 08023249379
2	NEMA/SEMA	Private	Benishiekh	Protection	24 Hours	Makinta Abba, (07018331077)
3	Civilian JTF	Public	Benishiekh	Protection	24 Hours	Babagana Bashir (08121163190)
4	Police	Public	Benishiekh	Protection	24 Hours	Geoffrey Moses 08029141950
5	Nigerian Army	Public	Benishiekh	Protection	24 Hours	Major Inusa (08088880361)

Legal Assistance/Counseling

	CENTRE	TYPE	LOCATION	SERVICES	BUSINESS HOUR	CONTACT PERSON
1	District Head Palace	Public	Banki	Reconciliation/ Counselling	24 Hours	Alh. Abba Aunoma, 08095226278

Humanitarian Service

	CENTRE	TYPE	LOCATION	SERVICES	BUSINESS HOUR	CONTACT PERSON
1	I.O.M	Private	Benishiekh	Shelter	24 Hours	Herhela,08026830191
2	UNICEF	Private	Benishiekh	Medical	24 Hours	Nil



STREPCIN
 Strengthening Sexual and
 Reproductive Health service
 provision in conflict affected
 communities in North-East



Gender Based Violence (GBV) is not a battle of the sexes, men and women can be perpetrators and survivors.

January 2021

Su	Mo	Tu	We	Th	Fr	Sa
					1	2
3	4	5	6	7	8	9
10	11	12	13	14	15	16
17	18	19	20	21	22	23
24	25	26	27	28	29	30
31						

February 2021

Su	Mo	Tu	We	Th	Fr	Sa
	1	2	3	4	5	6
7	8	9	10	11	12	13
14	15	16	17	18	19	20
21	22	23	24	25	26	27
28						

March 2021

Su	Mo	Tu	We	Th	Fr	Sa
	1	2	3	4	5	6
7	8	9	10	11	12	13
14	15	16	17	18	19	20
21	22	23	24	25	26	27
28	29	30	31			

April 2021

Su	Mo	Tu	We	Th	Fr	Sa
				1	2	3
4	5	6	7	8	9	10
11	12	13	14	15	16	17
18	19	20	21	22	23	24
25	26	27	28	29	30	

May 2021

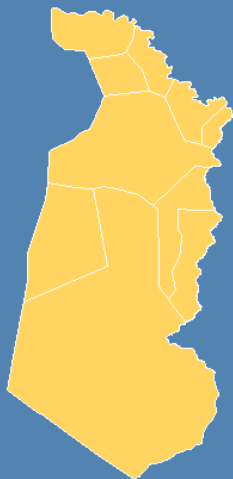
Su	Mo	Tu	We	Th	Fr	Sa
						1
2	3	4	5	6	7	8
9	10	11	12	13	14	15
16	17	18	19	20	21	22
23	24	25	26	27	28	29
30	31					

June 2021

Su	Mo	Tu	We	Th	Fr	Sa
		1	2	3	4	5
6	7	8	9	10	11	12
13	14	15	16	17	18	19
20	21	22	23	24	25	26
27	28	29	30			

REFERRAL DIRECTORY

Kala Balge Local
Government



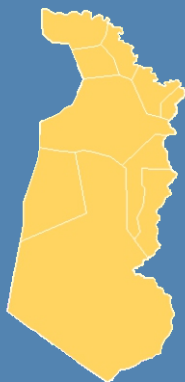
Area: 1,896 km²
Population: 60,797
(2006 census)
Postal Code: 611

Medical/Healthcare Entry Point (Clinical Management of Rape)

	CENTRE	TYPE	LOCATION	SERVICES	BUSINESS HOUR	CONTACT PERSON
1	UNICEF	Private	Rann	Medical	8am-5pm	Dr. Karchi 08037923210
2	HNERP	Private	Rann, Kala Balge	Medical	5 days (24 hours)	Dr. Olotu Muriana 08081593414
3	WHO-HTR	Private	Rann, Kala Balge	Medical	3 days	Goni Kachalla, +2370665492522, +2370683635289, 07036505235
4	MSF	Private	Rann, Kala Balge	Medical	Mon-Sat (8am-5pm)	Maikambo Abana, +2370676741876
5	ICRC	Private	Rann, Kala Balge	Medical	Nil	Abba Yusuf Apiya, +2370667503284, +2370673863396
6	EYN	Private	Rann, Kala Balge	Medical	Nil	Kanadi Shem, 08034613141

Psychosocial Support Entry Point (Adult and Children)

	CENTRE	TYPE	LOCATION	SERVICES	BUSINESS HOUR	CONTACT PERSON
1	HNERP	Private	Rann, Kala Balge	Psychosocial adult/children	5 Days (24 HOURS)	Fatima Bukar Muhammed , 07068307198
2	UNICEF	Private	Rann, Kala Balge	Psychosocial (Adult)	Mon - Sat (8am-5pm)	Zanna Abrah, 08037700714



Safety and Security

	CENTRE	TYPE	LOCATION	SERVICES	BUSINESS HOUR	CONTACT PERSON
1	Nigerian Police Force	Private	Rann	Protection	24 Hours	Bala Alfa, +2370652876791
2	Nigerian Police Force	Private	Rann, Kala Balge	Protection	24 Hours	Sgt. Abdullahi Habibu
3	NEMA/SEMA	Private	Rann, Kala Balge	Protection	24 Hours	Abdullahi Hassan, 08033233638
4	Nigerian Army	Private	Rann, Kala Balge	Protection	24 Hours	Mohammed Umar, 09078793838 Major Stanley Agboro, 08022005530

Legal Assistance/Counseling

	CENTRE	TYPE	LOCATION	SERVICES	BUSINESS HOUR	CONTACT PERSON
1	District Head Palace	Public	Rann	Reconciliation /Counseling	24 Hours	Alh. Babagana Shettima, 08168505761

Silence encourages the tormentor at the risk of more survivor, shatter the silence, play your part!

July 2021

Su	Mo	Tu	We	Th	Fr	Sa
				1	2	3
4	5	6	7	8	9	10
11	12	13	14	15	16	17
18	19	20	21	22	23	24
25	26	27	28	29	30	31

August 2021

Su	Mo	Tu	We	Th	Fr	Sa
1	2	3	4	5	6	7
8	9	10	11	12	13	14
15	16	17	18	19	20	21
22	23	24	25	26	27	28
29	30	31				

September 2021

Su	Mo	Tu	We	Th	Fr	Sa
			1	2	3	4
5	6	7	8	9	10	11
12	13	14	15	16	17	18
19	20	21	22	23	24	25
26	27	28	29	30		

October 2021

Su	Mo	Tu	We	Th	Fr	Sa
					1	2
3	4	5	6	7	8	9
10	11	12	13	14	15	16
17	18	19	20	21	22	23
24	25	26	27	28	29	30
31						

November 2021

Su	Mo	Tu	We	Th	Fr	Sa
	1	2	3	4	5	6
7	8	9	10	11	12	13
14	15	16	17	18	19	20
21	22	23	24	25	26	27
28	29	30				

December 2021

Su	Mo	Tu	We	Th	Fr	Sa
			1	2	3	4
5	6	7	8	9	10	11
12	13	14	15	16	17	18
19	20	21	22	23	24	25
26	27	28	29	30	31	

REFERRAL DIRECTORY

Gwoza Local Government



Area: 2,883 km²
Population: 276,312
(2006 census)
Postal Code: 610

Medical/Healthcare Entry Point (Clinical Management of Rape)

	CENTRE	TYPE	LOCATION	SERVICES	BUSINESS HOUR	CONTACT PERSON
1	P.H.C	Private UNICEF	Ajari Ward	Medical	8am-4pm daily	Aisha Musa Timta
2	View center	Private UNICEF	Limankara	Medical	8am-4pm daily	Asta Daniel
3	High court	Private UNICEF	Sabon Gari	Medical	8am-4pm daily	Halima Hamidu
4	IRC	Private	Gwoza	Medical	5 days	Dr. Akinla Olufemi, 08068977105
5	HNERP	Private	Gwoza	Medical	5 days (24 hours)	Dr. Muhammad Dungus 08061361496
6	MSF	Private	Gwoza	Medical	Mon-Sat (8am-5pm)	Jamane
7	WHO	Private	Pulka	Medical	Mon-Fri (8am-4pm)	Isa Buba
8	MSF	Private	Pulka	Medical	Mon-Sat (8am-5pm)	Victoria Eniola

Security & Safety

	CENTRE	TYPE	LOCATION	SERVICES	BUSINESS HOUR	CONTACT PERSON
1	Nigeria Police Force	Private	Gwoza	Protection	24 Hours	Insp. Dahiru Sani, 08023678359
2	NEMA/SEMA	Private	Gwoza	Protection	24 Hours	Isah Nuhu, 07061151641
3	NEMA/SEMA	Private	Gwoza	Protection	24 Hours	Maryam Hammadama, 08032529201

Psychosocial Support Entry Point (Adult and Children)

	CENTRE	TYPE	LOCATION	SERVICES	BUSINESS HOUR	CONTACT PERSON
1	I.O.M	Private	Gwoza	PSS	5 Days, 8HRS	Celestine Ameh, 08067859653
2	HNERP	Private	Gwoza	PSS	5 Days, 8HRS	Abdullateef Ibrahim, 07067608441



STRESPCIN
Strengthening Sexual and
Reproductive Health service
provision in conflict affected
communities in North-East

act:onaid

NIG POLICE

Marte division: DSP. Adamu Apagu (DPO) 08025550845
Gwoza division: ASP. Audu Musa (In-charge) 08026297502, 07064264102

Mongonu division: Inspector. Thomas Elam
08064141478

Guzamala division: Sgt. Emmanuel
08061342060

Nganzai division: ASP. Dahiru Modi
07038046458

1. Day and night patrol in areas marked out for potential criminal activities (E.g. rape, killings etc.)
2. Arrest alleged perpetrator
3. Issue Police Form (PF3) free of charge from camp police station.
4. Gather evidence and complete file for case
5. Inform Survivors and witnesses on Court hearing
6. Provide physical protection

NIG ARMY

Flight Officer. M.U Lawan
08168451707

1. Provide daily security around the entire camp.
2. Liaise with intelligence operative to have firsthand security information for effective safety and security of the terrain.

NEMA/SEMA

Mohammed Gujbawo
08062486278

1. Ensure safety and coordination in the camp
2. Liaise with other agencies/actors for safety and security of camp members

CJTF

Mohammed Asheik Buba E.
08081051670

1. Provide local security in and out of the camp.
2. Ensure that strange persons and movements are identified and investigated.
3. Work closely with the police and military to ensure safety in the camp.
4. Track perpetrators and report to the appropriate authority.

Safety/Security

FIDA

Fatima Imam 07030352119

1. Provide legal counseling
2. Transport, accommodation and meals for victim/witness to attend court
3. Legal representation and Case follow-ups
4. Dissemination of legal information
5. Inform survivors of court hearing
6. Free Legal advice and representation,
7. Dissemination of legal information, Legal counseling,
8. Prosecution.

STATE MINISTRY OF JUSTICE

B.R Balami, 08082055518,

1. Coordination, prosecution and collation of case data
2. Legal advice for GBV cases.

NBA

A.A Alfa, 08035268575

1. Free Legal representation
2. Dissemination of legal information
3. Legal Advice.

NATIONAL HUMAN RIGHT

P.J. Bwala

1. Legal representation,
2. Counseling.
3. Dissemination of legal information.

LEGAL AID COUNCIL

J.U Mshelia

1. Free Legal representation
2. Dissemination of legal information
3. Legal counseling
4. Legal advice

Legal/Justice

GOVERNMENT AND IMPLEMENTING PARTNER (Opened 12 hours daily)

UNICEF

Mrs. Halima Rufai, Clinic coordinator,
08036469005

1. Post rape kit for treatment survivors
2. PEP treatment within 72 hours.
3. STI's prophylaxis treatment within,
4. Emergency contraceptive within 24 hours or 120 hours where **IUD is available
5. Treatment of injuries Tetanus vaccination
6. Health counseling
7. Medical examination.
8. HIV and Pregnancy Test

IRC

Milka Karimu, Nurse/Midwife
09061770096

1. Logistical support during referrals- provide transport and food/feeding
2. Support health facilities with Kit 3 (Post rape treatment), kit 5 (Treatment of sexually transmitted infections) and kit 9 (Suture of tears (cervical and vaginal) and vaginal examination) for survivors of sexual assault.

ACF

1. Treatment of rape injuries
2. Health counseling

Health Care Services

IRC

Zarah Mohammed Kareto,
08036041154

1. GBV case management and basic counseling & follow up
 2. Provide dignity kits** to survivors
 3. Provide psychosocial support activities (knitting, crocheting, bead making and cap making)
 4. Provide opportunity for women to meet and discuss issues affecting their lives
- ** Dignity kit contents -bag, sanitary pad, 6 yards of wrappers, tooth brush and paste, Vaseline, comb, shaving stick, 2 pants and slippers)

UNFPA

[Hamira Welye.](#)
[08126620434.](tel:08126620434)
welye@unfpa.org

Sylvia Opinia
GBV (Sector)
Coordinator, Nigeria
Email: opinia@unfpa.org
Telephone: +234 (0) 8150835954 or +234 (0) 9077779557

ActionAid Nigeria

Ipoade Omilaju with NO
0802 337 0724

1. Provision of Integrated Sexual Gender Based Violence (SGBV) interventions and Sexual and Reproductive Health services based on the Minimum Initial package
2. Provide Livelihood support activities Service.

IOM

Julie (SGBV focal point for Counseling), 08038854717
Mama Martha (IOM MH referral team lead for Mental health cases), 08067465990
Ayuba Saleh (Team lead for safe space), 08027635397
1. Counseling /GBV emotional support
2. Safe space for women and children/peer support

Psychosocial Support Services (PSS)

MINISTRY OF WOMEN AFFAIRS AND SOCIAL DEVELOPMENT (MWASD)

Lidia Wakama, Social worker, **07061319197**

1. GBV case management
2. GBV emotional support/basic counseling and
3. follow up accompany survivors for medical care/safety and security protection.
4. Women's or girl's peer support group
5. Women's centre
6. Skills training program
7. Income generation project

January 2022

Su	Mo	Tu	We	Th	Fr	Sa
						1
2	3	4	5	6	7	8
9	10	11	12	13	14	15
16	17	18	19	20	21	22
23	24	25	26	27	28	29
30	31					

March 2022

Su	Mo	Tu	We	Th	Fr	Sa
		1	2	3	4	5
6	7	8	9	10	11	12
13	14	15	16	17	18	19
20	21	22	23	24	25	26
27	28	29	30	31		

February 2022

Su	Mo	Tu	We	Th	Fr	Sa
		1	2	3	4	5
6	7	8	9	10	11	12
13	14	15	16	17	18	19
20	21	22	23	24	25	26
27	28					

April 2022

Su	Mo	Tu	We	Th	Fr	Sa
					1	2
3	4	5	6	7	8	9
10	11	12	13	14	15	16
17	18	19	20	21	22	23
24	25	26	27	28	29	30



actionaid



COMMUNITY SPONSORSHIP

- >>> Initiative for YOU to donate in support of extremely poor communities across Nigeria.
- >>> Platform for YOU to help vulnerable and excluded communities to overcome poverty in areas of food, education, health, governance and emergencies situations.

Sign Up  www.actionaid-ngr.org

Donation Channels



Cash, cheque deposit or bank transfer

>>> ActionAid Nigeria Community Sponsorship | 2024080600 | First Bank
0216379681 | GTBank

>>> ActionAid International Foundation Nigeria Ltd | Gte 072410434 | Access Bank



07007070700

Published By:
ActionAid

with support from:



actionaid

Plot 477, 41 Crescent,
off Sa'adu Zungur Avenue,
Gwarinpa, Abuja.

Tel: +234 (0) 812 888 8825-7
Website: www.actionaid.org/nigeria
Email: info.nigeria@actionaid.org

Lagos

1A, Adeboye Solanke Street, off Allen Avenue (behind
Zenith Bank)
Ikeja, Lagos.
Tel: +2348126644268

Maiduguri

No 3, Gombole Street, off Gombole Road Old GRA,
Opposite Giwa Barracks
Maiduguri

 ActionAid Nigeria

 ActionAidNG